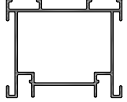
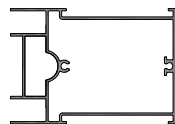







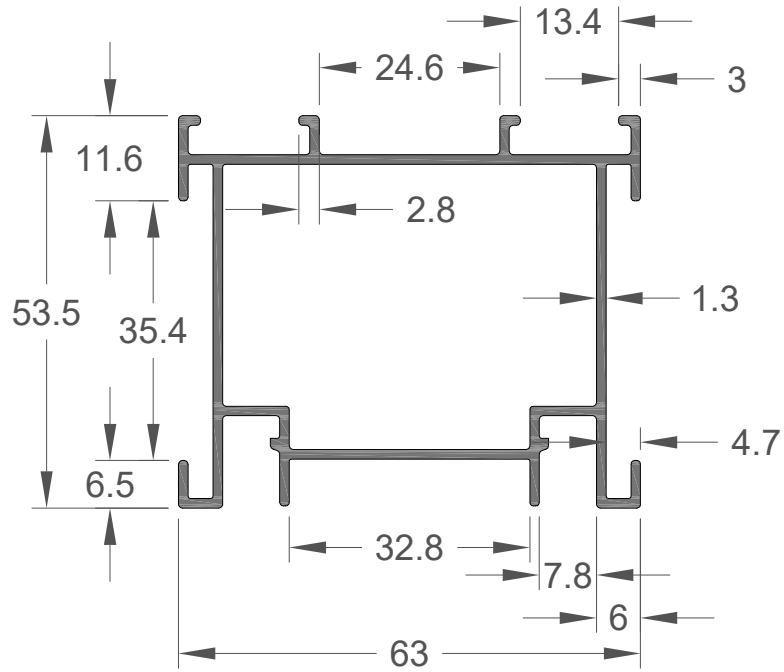


# Pivot MultiFrame

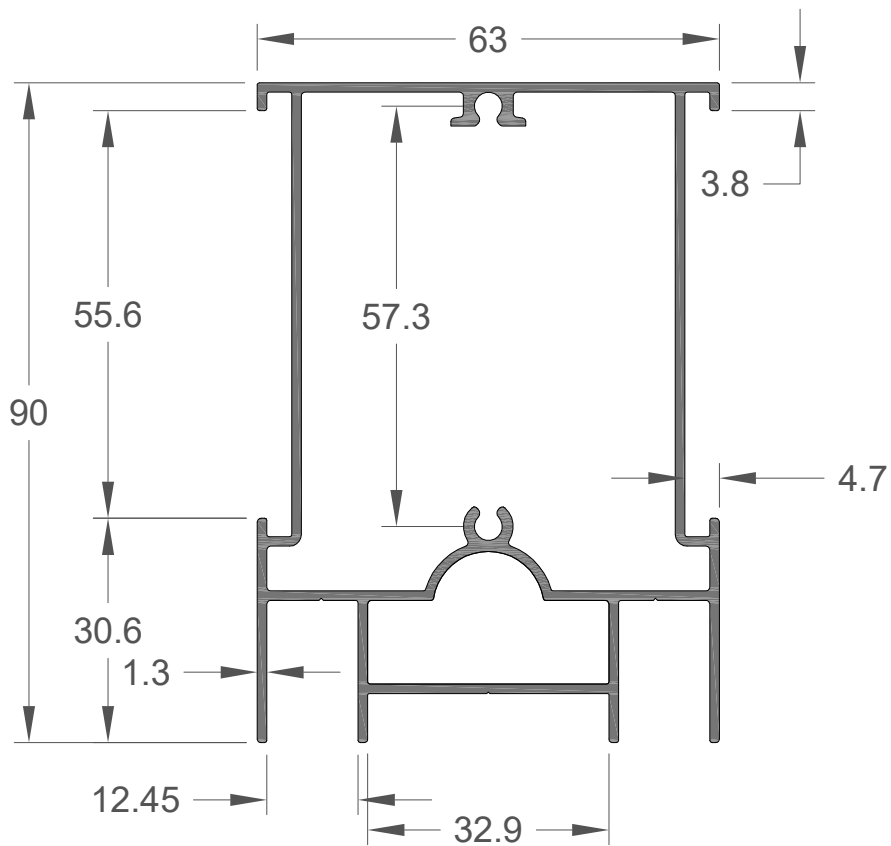
ΚΩΔΙΚΟΣ CODE	ΣΧΗΜΑ SKETCH	ΜΗΚΟΣ LENGTH	ΘΕΩΡΗΤΙΚΟ ΒΑΡΟΣ (gr/m) THEORETICAL WEIGHT	Ix cm <sup>4</sup>	Iy cm <sup>4</sup>	ΠΕΡΙΓΡΑΦΗ DESCRIPTION
24-77-00101		6	1029	13.52	19.08	Προφίλ πανωκάσι και πλευρική κάσα Pivot Upper and side frame Pivot
24-77-00102		6	1499	53.95	26.87	Προφίλ φύλλου Pivot Sash profile Pivot
24-77-00103		6	875	1.26	19.08	Προφίλ κατωκάσι Pivot Threshold profile Pivot
24-77-00104		6	654	13.77	0.97	Επιπρόσθετο προφίλ πλευρικής κάσας και φύλλου Pivot Additional profile for Side Frame and sash Pivot
24-77-00105		6	219	0.03	1.97	Προφίλ καπάκι Pivot Cover profile Pivot
24-77-00107		6	415	0.11	10.78	Προφίλ καπάκι για πανωκάσι Pivot Cover profile for upper frame Pivot
24-77-00108		6	394	8.6	0.03	Καπάκι για βουρτσάκι Pivot Cover for brush Pivot
24-77-00100	 Εκτός κλίμακας Out of scale	6	2284	29.88	190.04	Προφίλ λαβής Pivot Handle profile Pivot
24-95-00132	 Εκτός κλίμακας Out of scale	6	137.5	0.07	0.17	Προφίλ συγκράτησης επένδυσης Holding profile for cladding

# Pivot MultiFrame



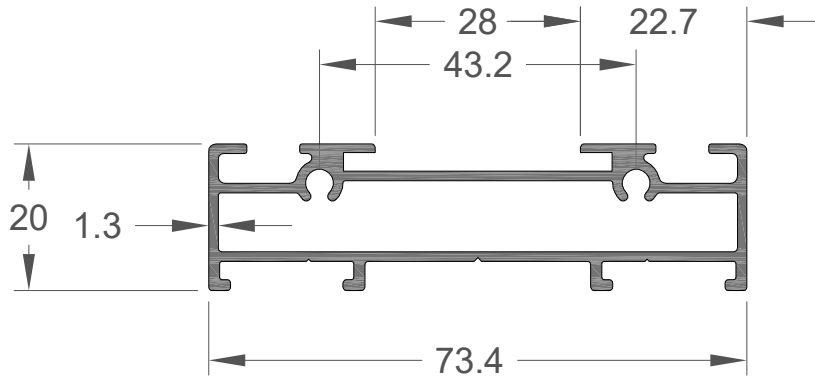
**24-77-00101**  
1029 gr/m

Προφίλ πανωκάσι και  
πλευρική κάσα Pivot  
Upper and side frame Pivot



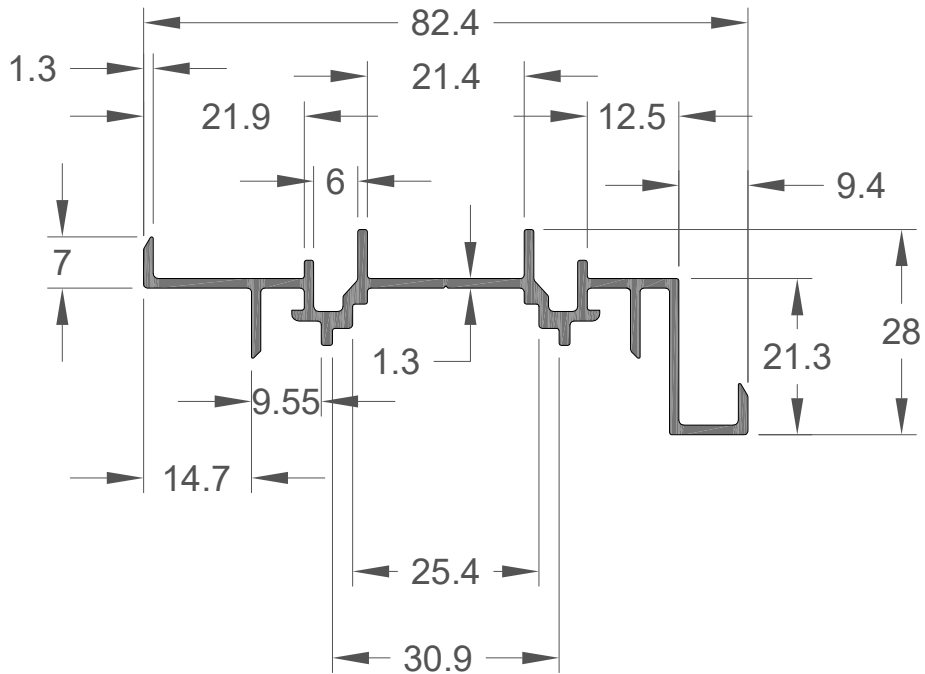
**24-77-00102**  
1499 gr/m

Προφίλ φύλλου Pivot  
Sash profile Pivot



**24-77-00103**  
875 gr/m

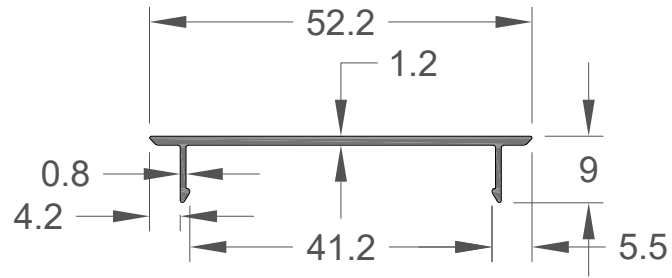
Προφίλ κατωκάσι Pivot  
Threshold profile Pivot



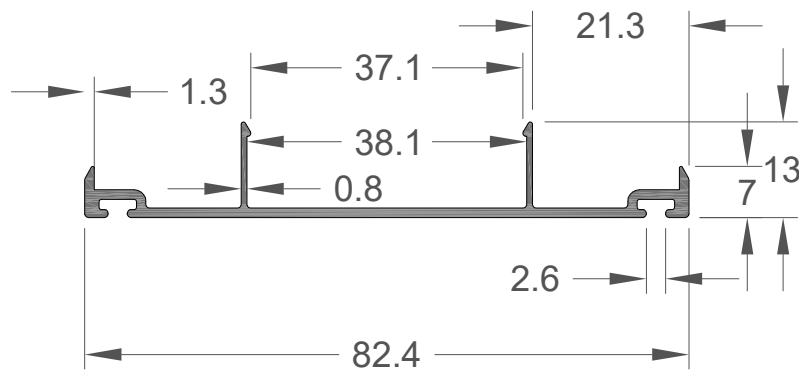
**24-77-00104**  
654 gr/m

Επιπρόσθετο προφίλ πλευρικής  
κάσας και φύλλου Pivot  
Additional profile for Side Frame and  
sash Pivot

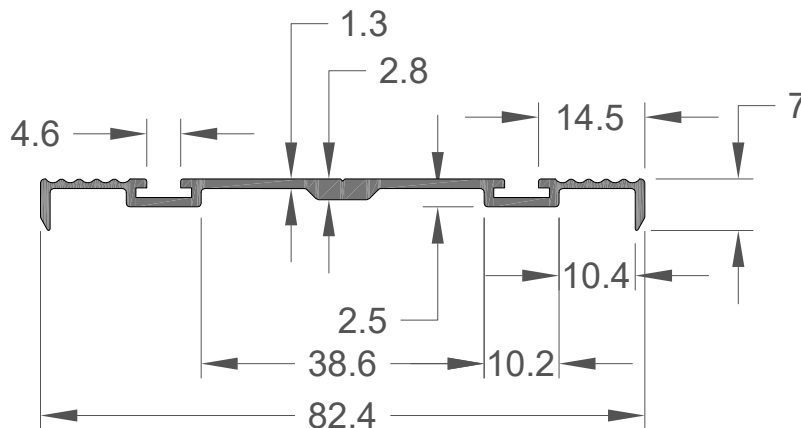
# Pivot MultiFrame



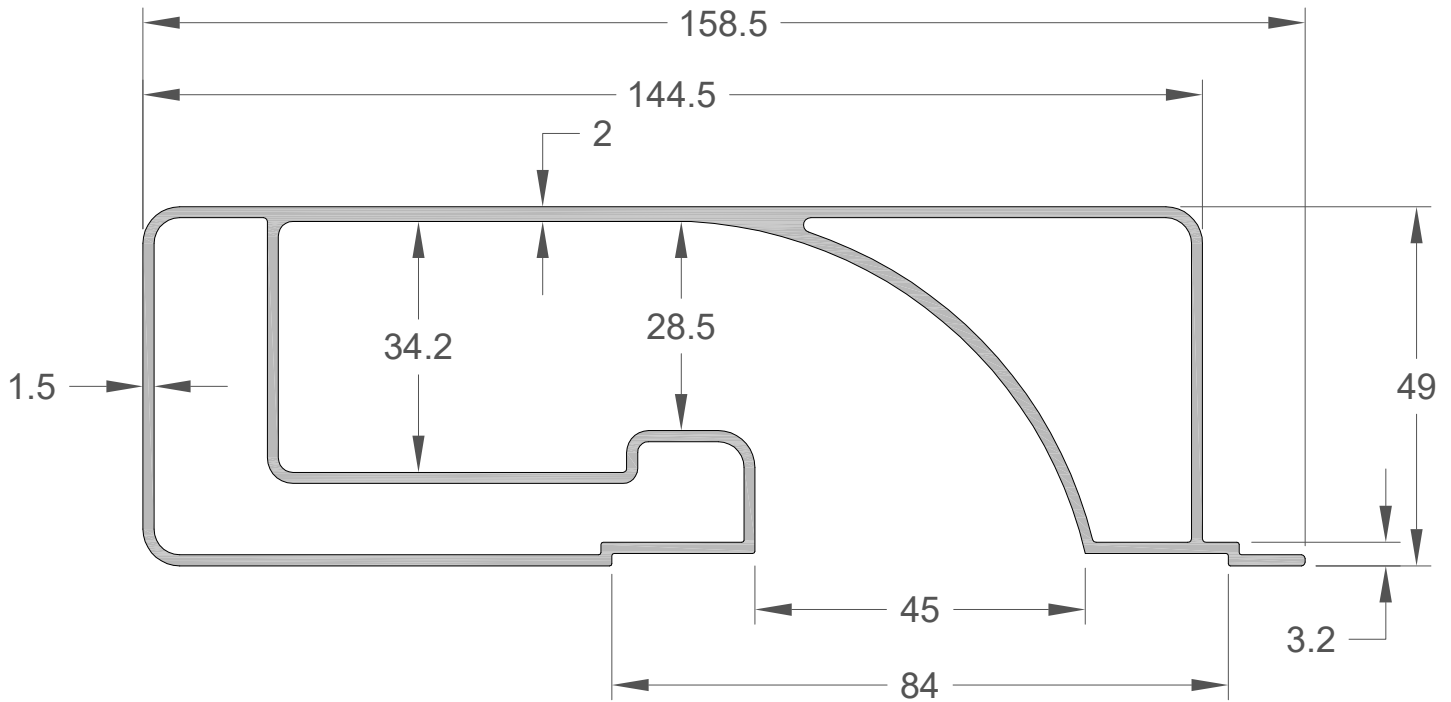
<b>24-77-00105</b> 219 gr/m	<b>Προφίλ καπάκι Pivot</b> Cover profile Pivot
--------------------------------	---



<b>24-77-00107</b> 415 gr/m	<b>Προφίλ καπάκι για πανώκασι Pivot</b> Cover profile for upper frame Pivot
--------------------------------	--

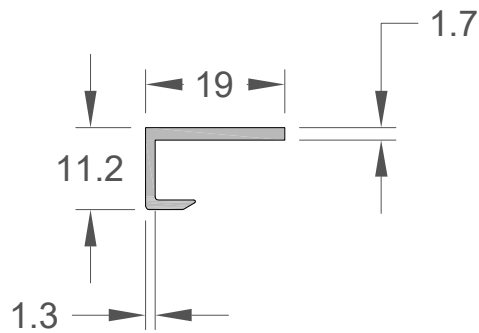


<b>24-77-00108</b> 394 gr/m	<b>Καπάκι για βουρτσάκι Pivot</b> Cover for brush Pivot
--------------------------------	--



**24-77-00100**  
2284 gr/m

Προφίλ λαβής Pivot  
Handle profile Pivot

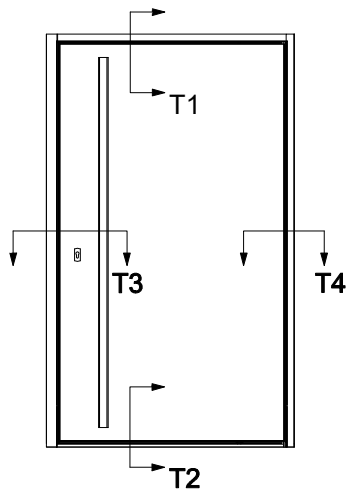


**24-95-00132**  
137.5 gr/m

Προφίλ συγκράτησης επένδυσης  
Holding profile for cladding

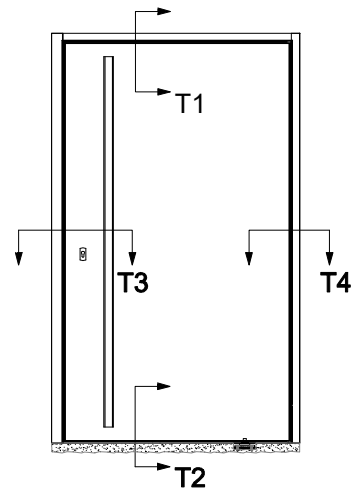
# Typologies

**ΠΡΟΣΟΨΗ 1**  
FRONT VIEW 1



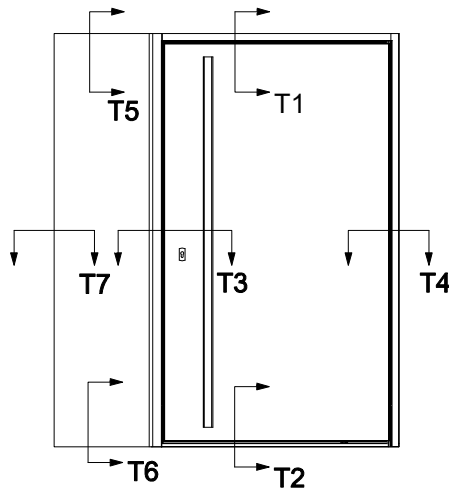
Σελίδες / Pages: 10-11

**ΠΡΟΣΟΨΗ 2**  
FRONT VIEW 2



Σελίδα / Page: 12

**ΠΡΟΣΟΨΗ 3**  
FRONT VIEW 3

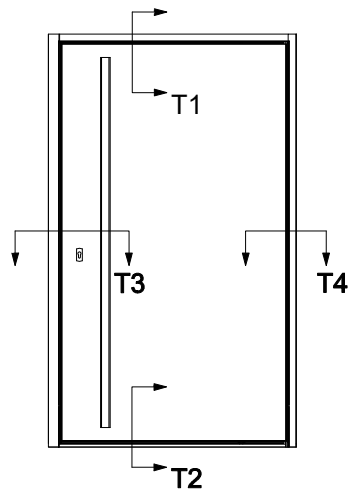


Σελίδες / Pages: 13-14

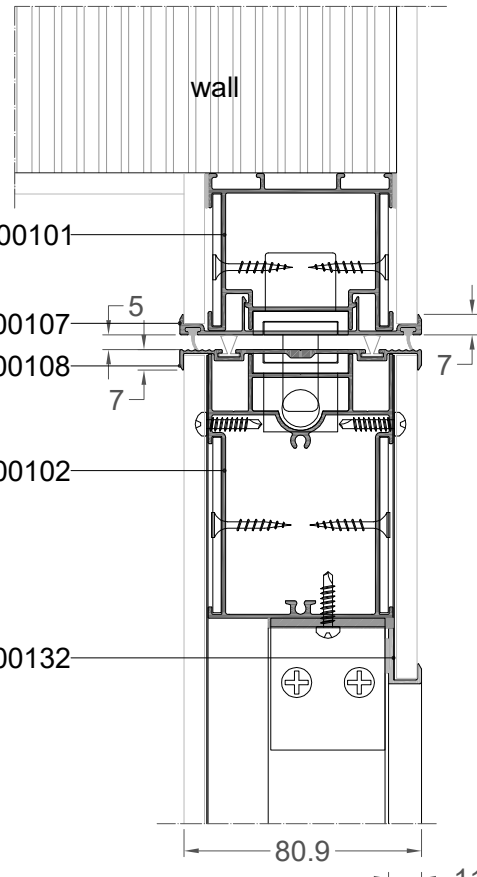


# Sections

**ΠΡΟΣΟΨΗ 1**  
FRONT VIEW 1

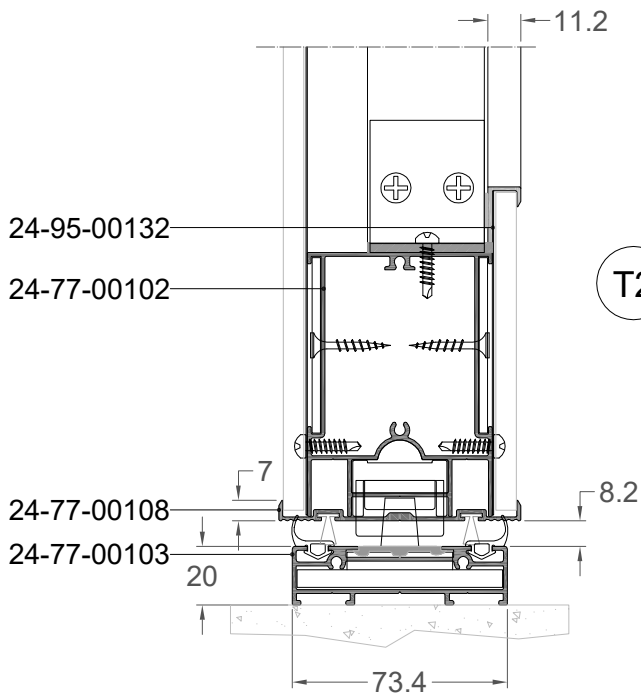


External wall

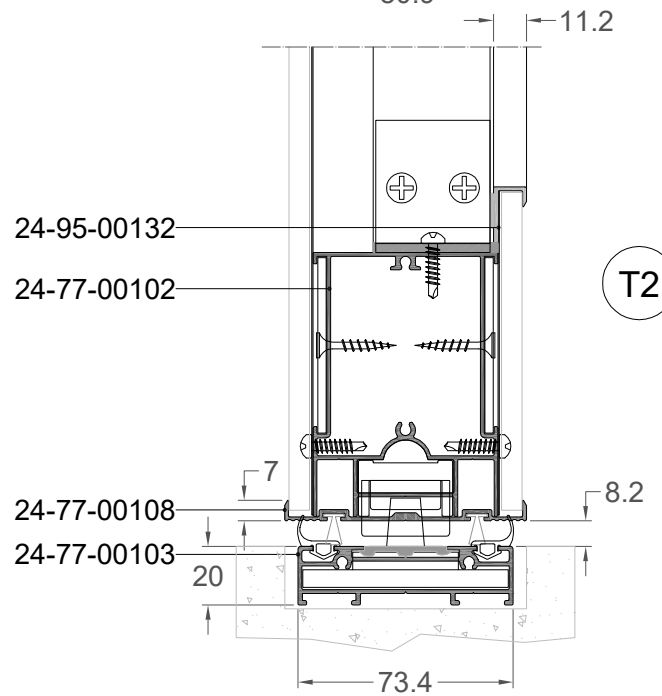


T1

**ΕΝΑΛΛΑΚΤΙΚΑ ΟΤΑΝ ΤΟ ΚΑΤΩΚΑΣΙ ΕΙΝΑΙ ΠΑΝΩ ΑΠΟ ΤΟ ΕΔΑΦΟΣ:**  
**ALTERNATIVELY WHEN THE THRESHOLD IS ABOVE OF THE GROUND :**

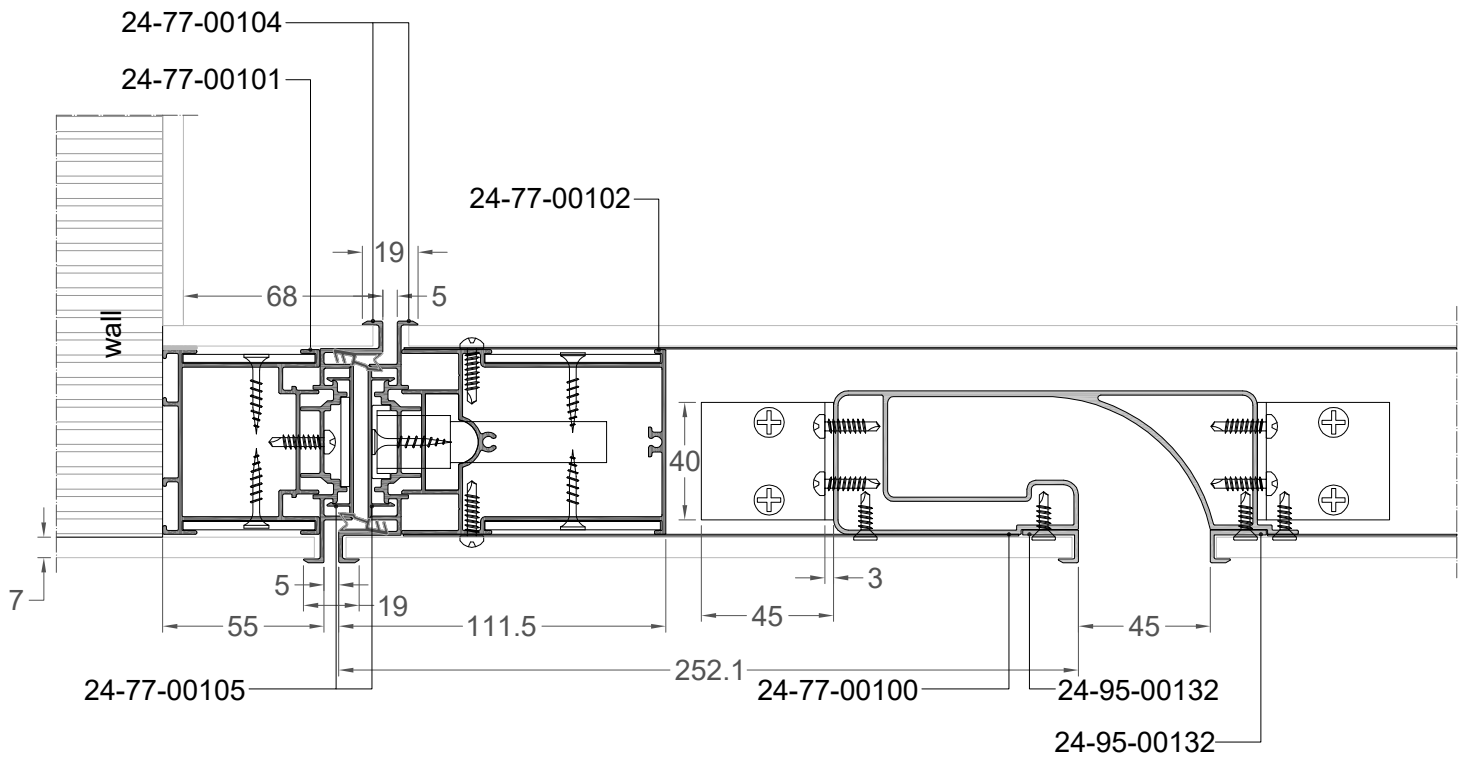
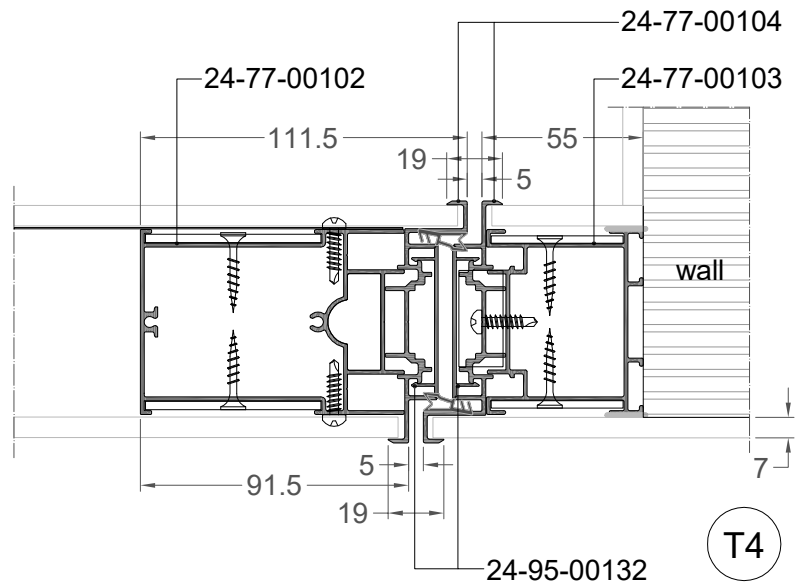
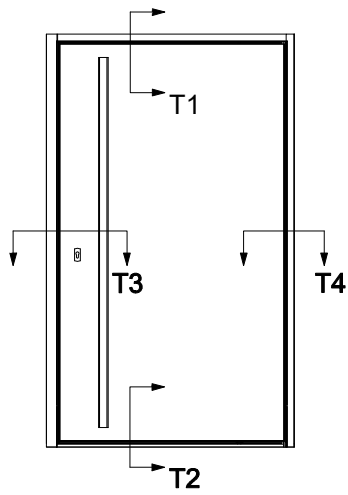


T2



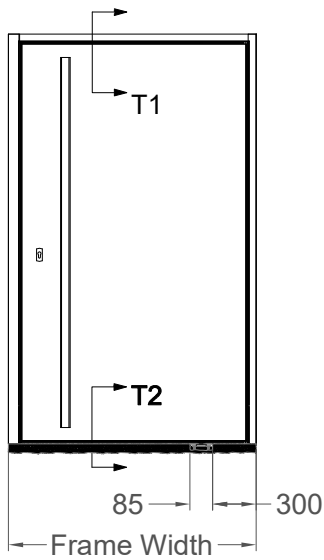
T2

**ΠΡΟΣΟΨΗ 1**  
FRONT VIEW 1

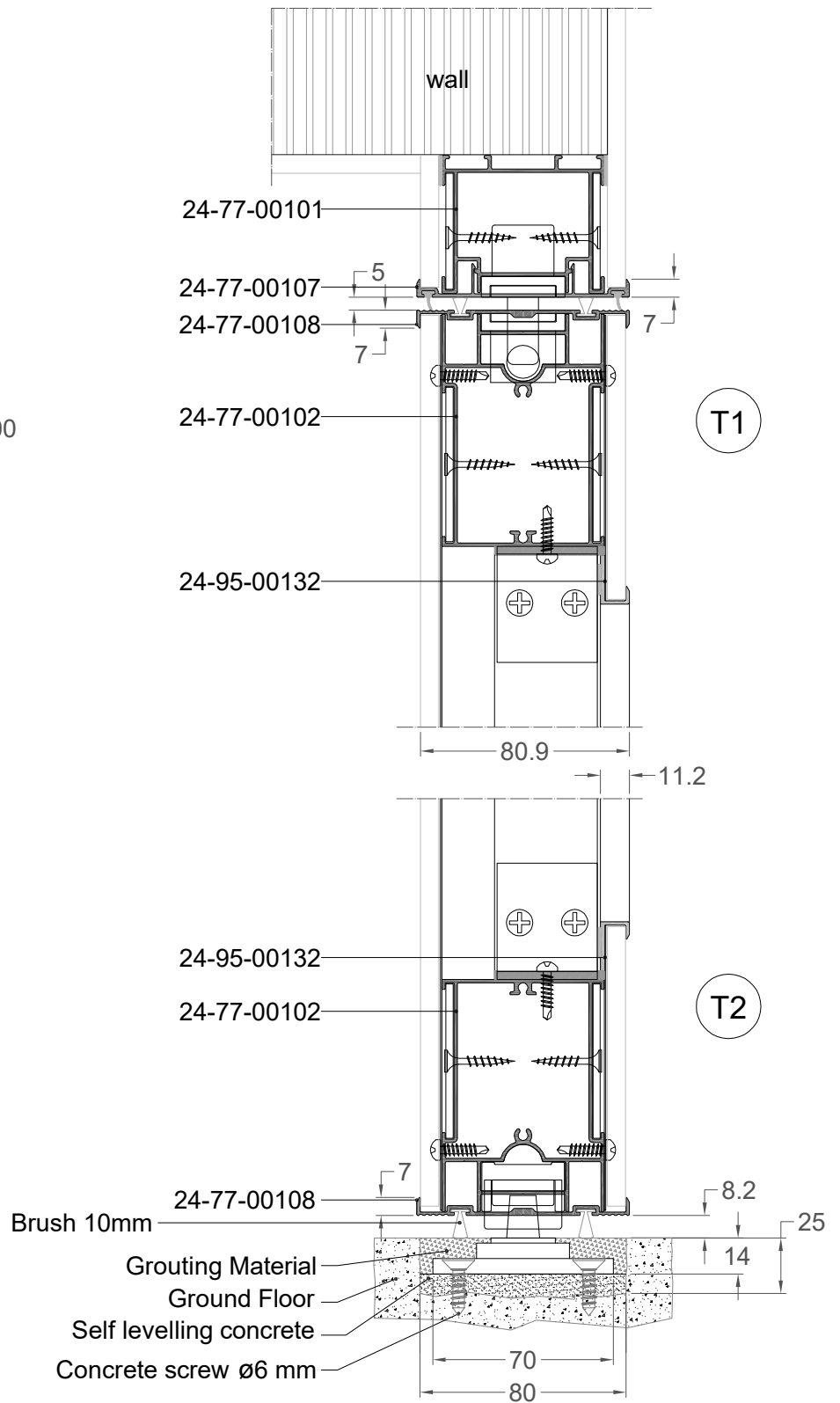


# Pivot MultiFrame

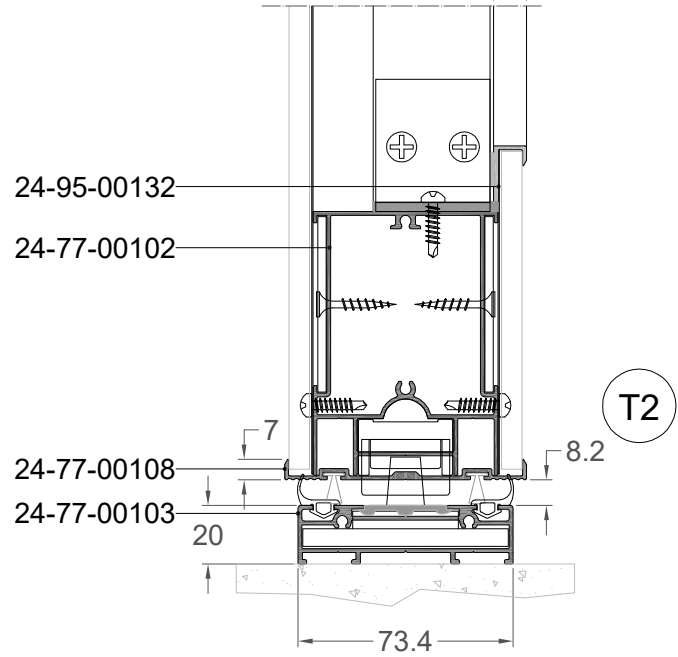
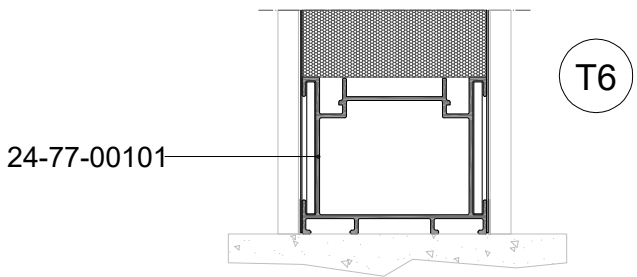
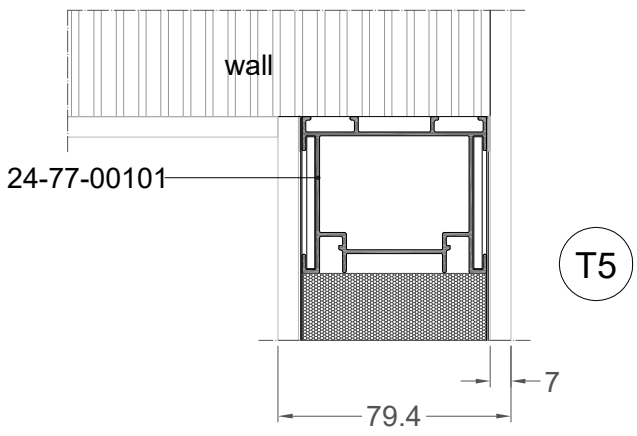
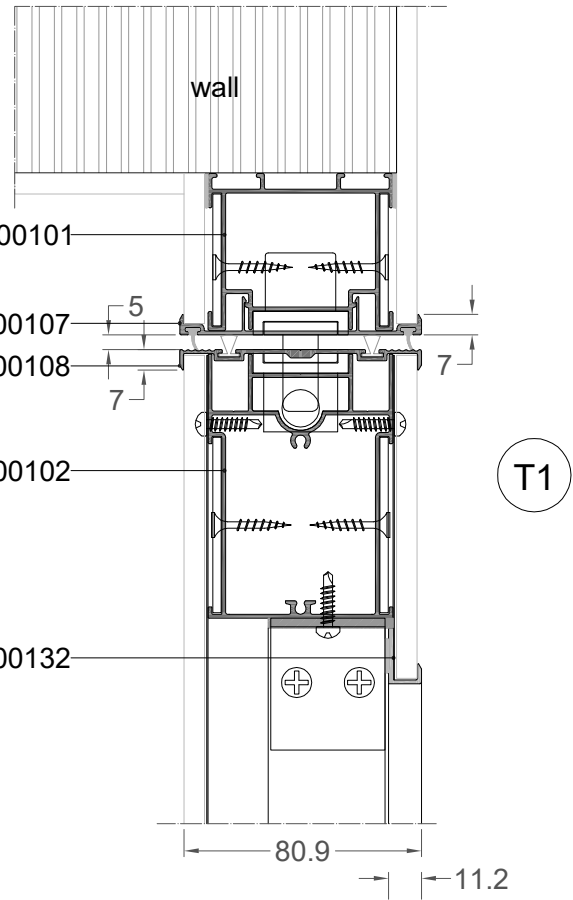
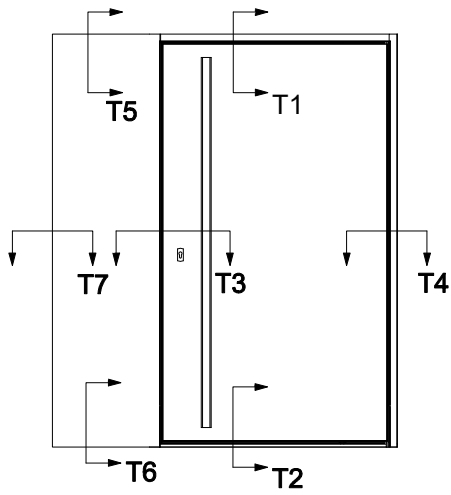
**ΠΡΟΣΟΨΗ 2**  
FRONT VIEW 2



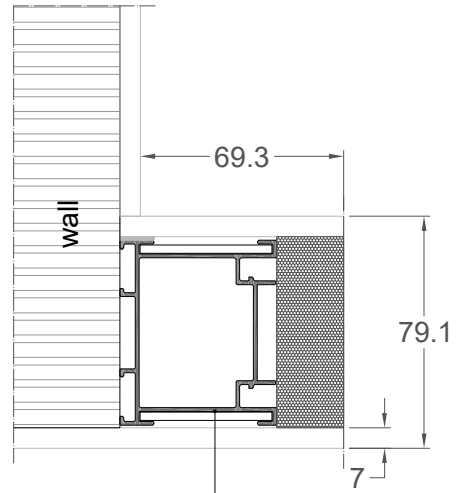
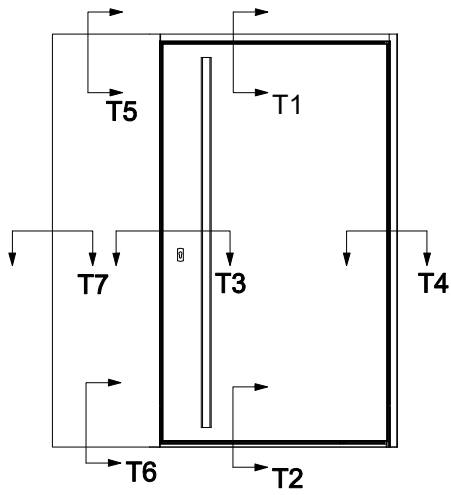
**ΕΝΑΛΛΑΚΤΙΚΑ ΟΤΑΝ ΔΕΝ ΧΡΗΣΙΜΟΠΟΙΕΙΤΑΙ ΤΟ ΚΑΤΩΚΑΣΙ :**  
ALTERNATIVELY WHEN NOT IN USE WITH THE THRESHOLD :



**ΠΡΟΣΟΨΗ 3**  
FRONT VIEW 3

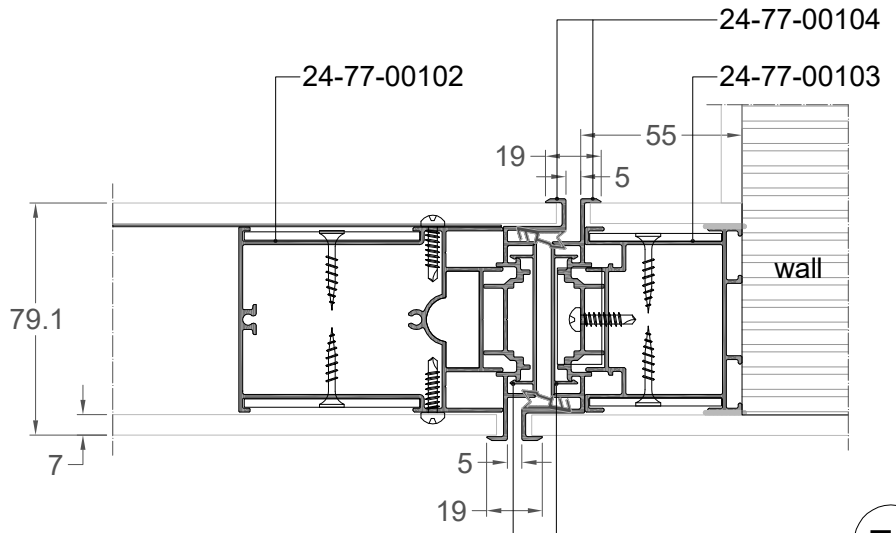


**ΠΡΟΣΟΨΗ 3**  
FRONT VIEW 3

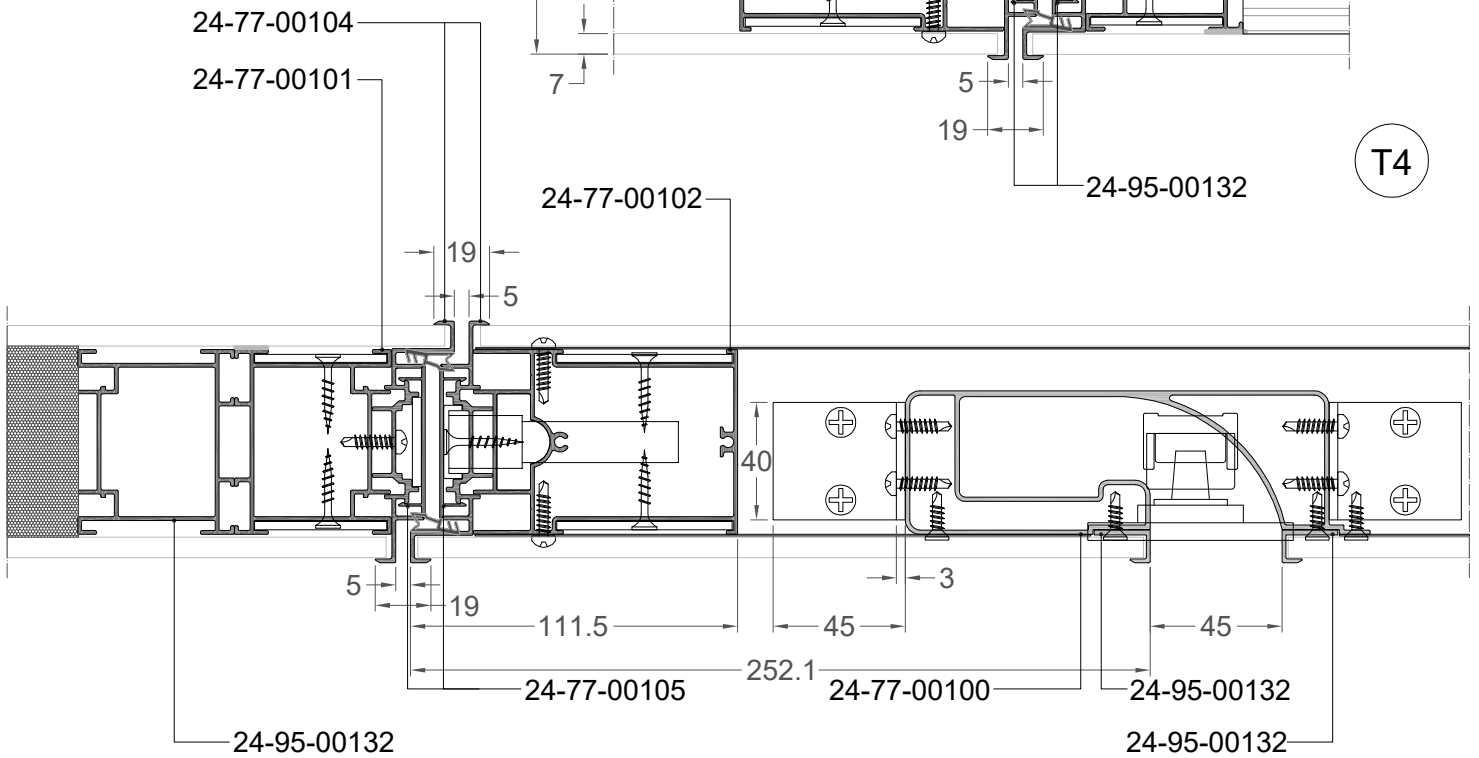


T7

24-95-00132



T4

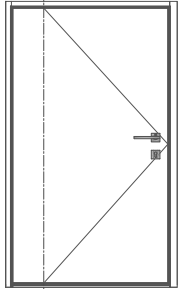


T3

# Milling-Cutting Dimensions

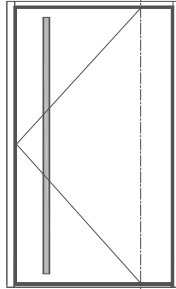
**Χάντρωμα πανωκάσι για εξαρτήματα μηχανισμού**  
**Machining on upper frame profile for mechanism**

**Μπροστά Όψη**  
Front View

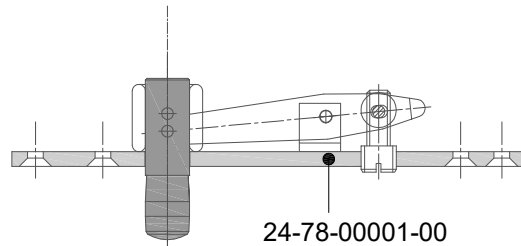


**Μέσα Πλευρά**  
Inside

**Πίσω όψη**  
Back View



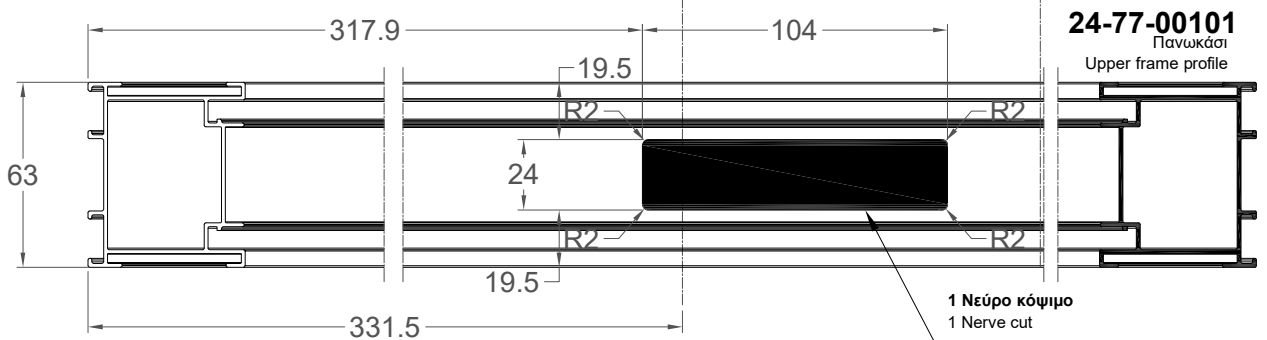
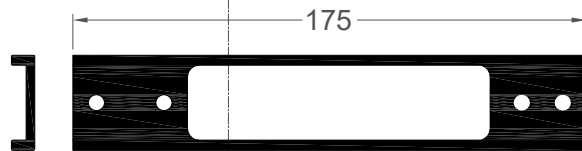
**Έξω Πλευρά**  
Outside



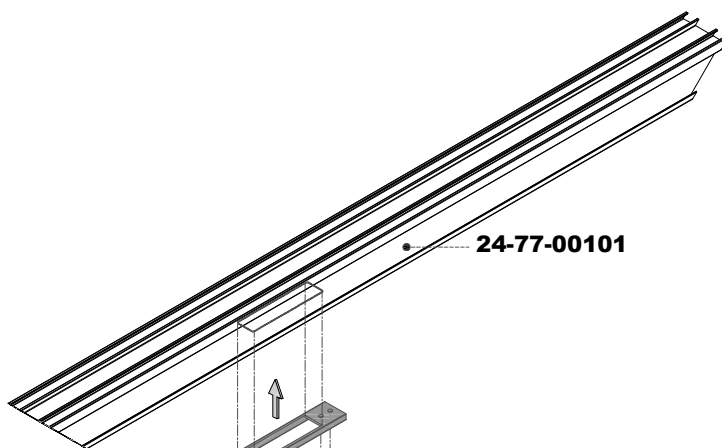
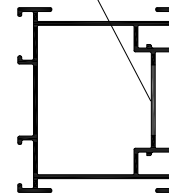
24-78-00001-00



24-78-00013-00



**Κέντρο περιστροφής**  
Centerline



24-77-00101

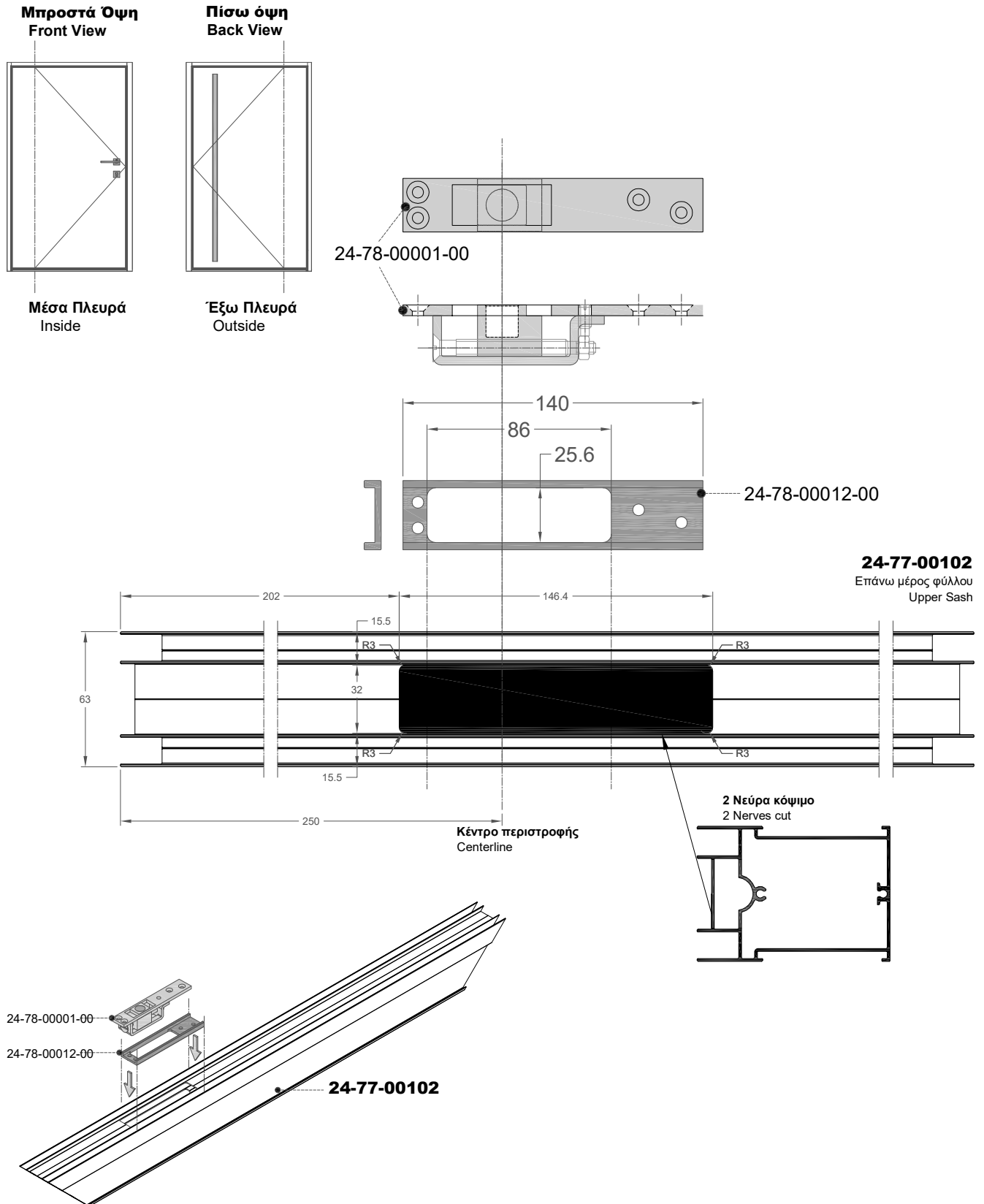
24-78-00013-00

24-78-00001-00



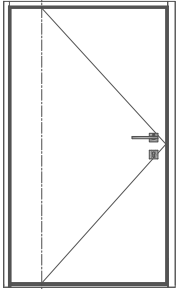
# Pivot MultiFrame

## Χάντρωμα επάνω μέρους φύλλου για εξαρτήματα μηχανισμού Machining on upper sash for mechanism



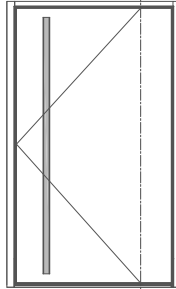
## Χάντρωμα κάτω μέρους φύλλου για εξαρτήματα μηχανισμού Machining on lower sash for mechanism

**Μπροστά Όψη**  
Front View



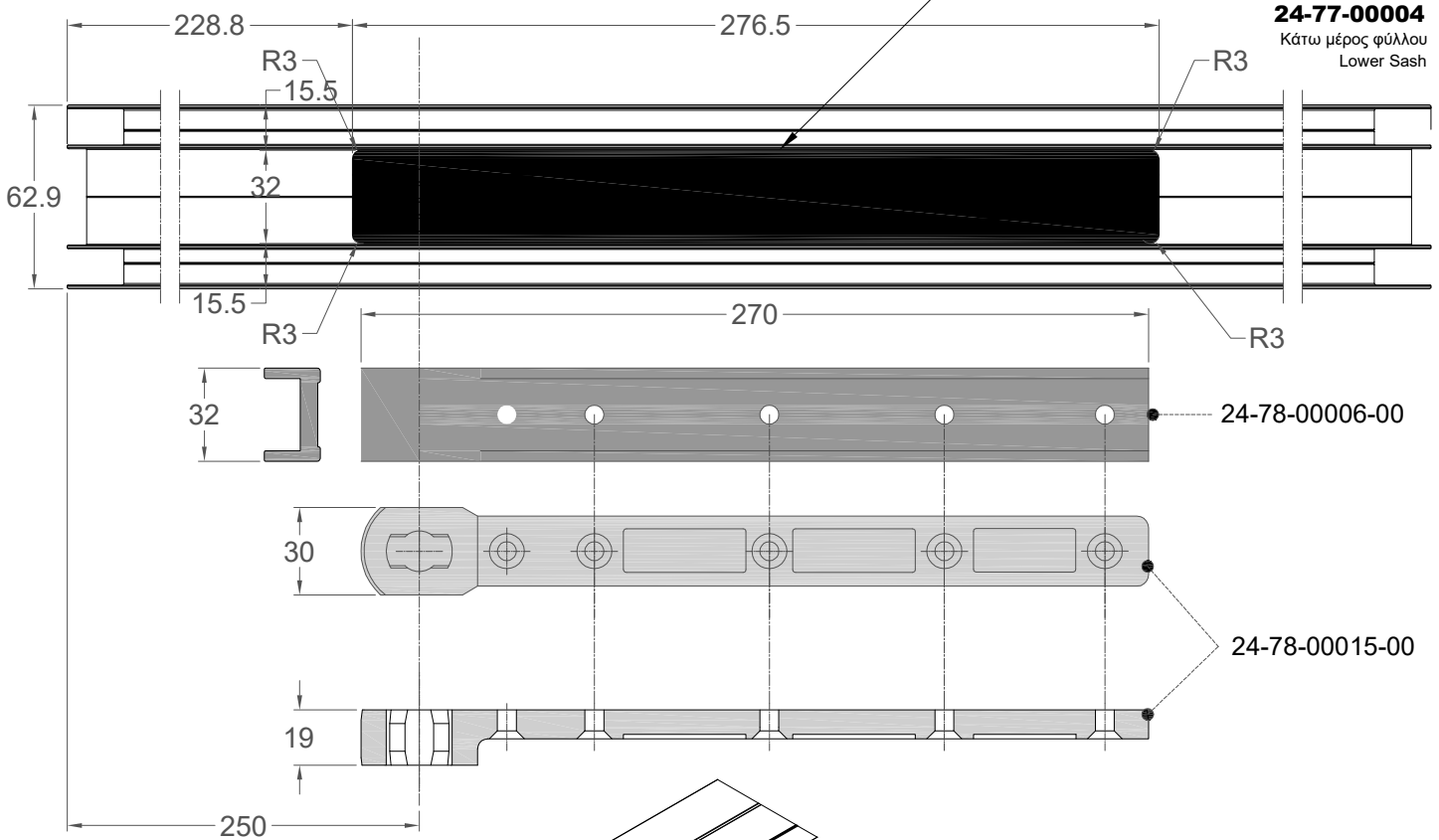
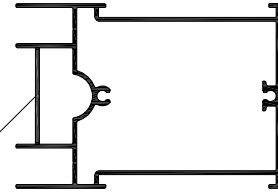
**Μέσα Πλευρά**  
Inside

**Πίσω όψη**  
Back View



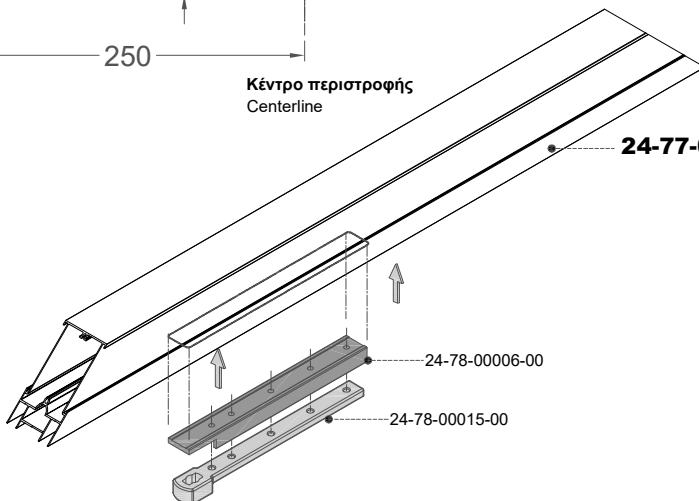
**Έξω Πλευρά**  
Outside

**1 Νεύρο κόψιμο**  
1 Nerve cut



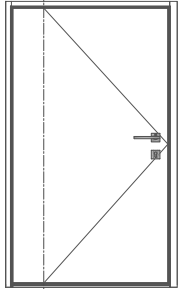
**Κέντρο περιστροφής**  
Centerline

**24-77-00102**



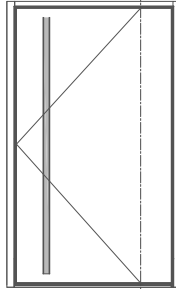
**Χάντρωμα κατωκάσι για βάση μηχανισμού**  
**Machining on floor profile for mechanism**

**Μπροστά Όψη**  
Front View



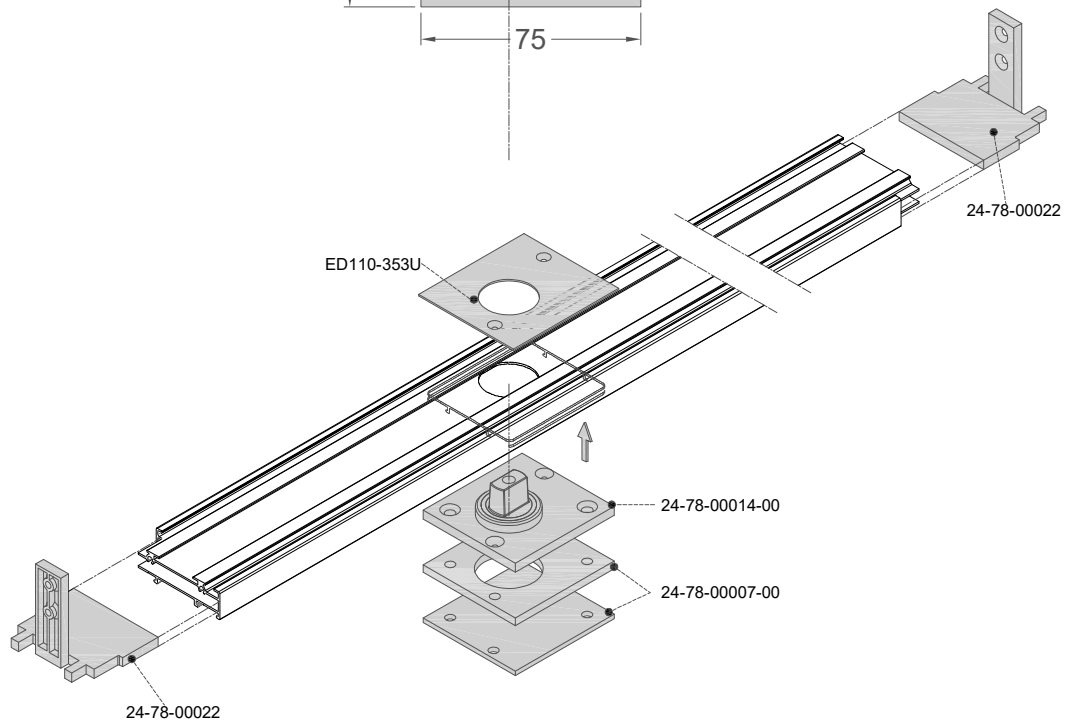
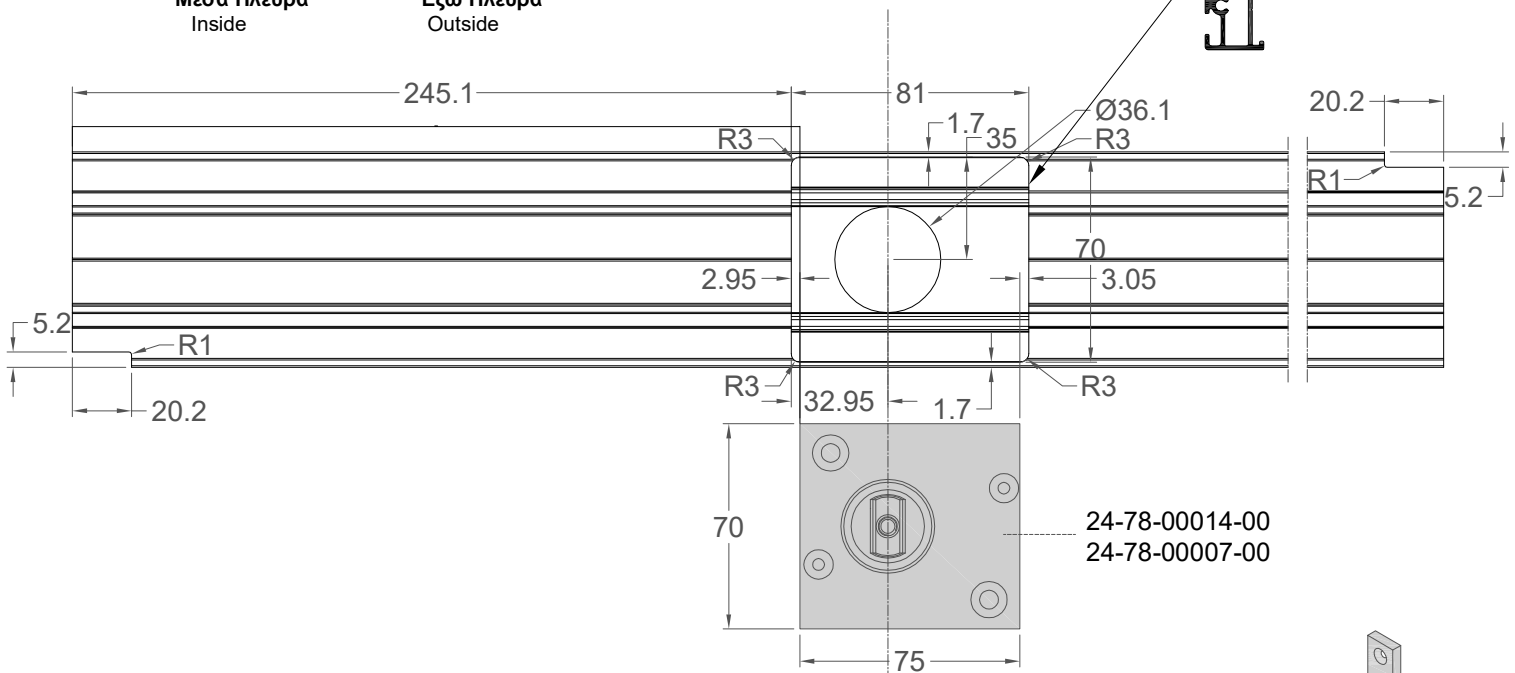
**Μέσα Πλευρά**  
Inside

**Πίσω όψη**  
Back View



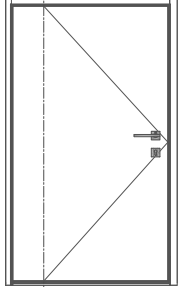
**Έξω Πλευρά**  
Outside

**3 Νεύρα κόψιμο**  
3 Nerves cut

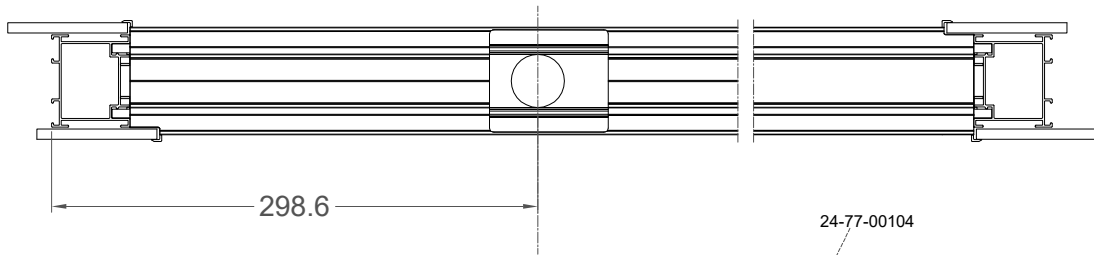
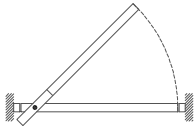


## Τοποθέτηση πλαστικών ταπών στο κατωκάσι Plastic cover installation to the floor profile

**Όψη**  
FRONT VIEW



**Κατοψη**  
TOP VIEW



Κέντρο περιστροφής  
Centerline

Μέσα Πλευρά  
Inside

24-77-00104

**24-77-00101**  
Πλευρική κάσα  
Side frame

**Βήμα 2ο:**  
Σύρουμε το επιπρόσθετο προφίλ πλευρικής κάσας προς τα κάτω.  
Step 2: Drag downwards the additional profile for side frame

24-77-00104

**Βήμα 3ο:**  
Τοποθετείται το προφίλ καπάκι στο επιπρόσθετο προφίλ πλευρικής κάσας.  
Step 3: Put the cover profile on the additional profile for side frame.

24-77-00105

**4 x ST 4.2x22mm**  
Βίδες σύνδεσης τάπας με πλευρική κάσα  
Screws of side frame's cover

24-78-00022

**Έξω Πλευρά**  
Outside

**24-77-00101**  
Πλευρική κάσα  
Side frame

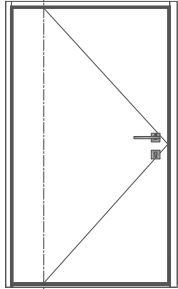
**Βήμα 1ο:** Βιδώνονται οι τάπες στη πλευρική κάσα  
Step 1: Screw the caps to the side frame

24-77-00105  
24-78-00022

**Βήμα 4ο:** Σύρουμε το κατωκάσι προς την τάπα ώστε να συνδεθεί με την πλευρική κάσα.  
Step 4: Drag the threshold on the cap's side to connect them with the side frame.

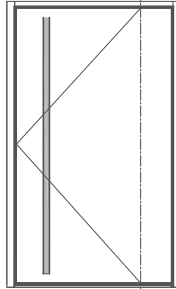
## Τοποθέτηση τάπας για το προφίλ χερουλιού. Installation of cap for handle profile

**Μπροστά Όψη**  
Front View

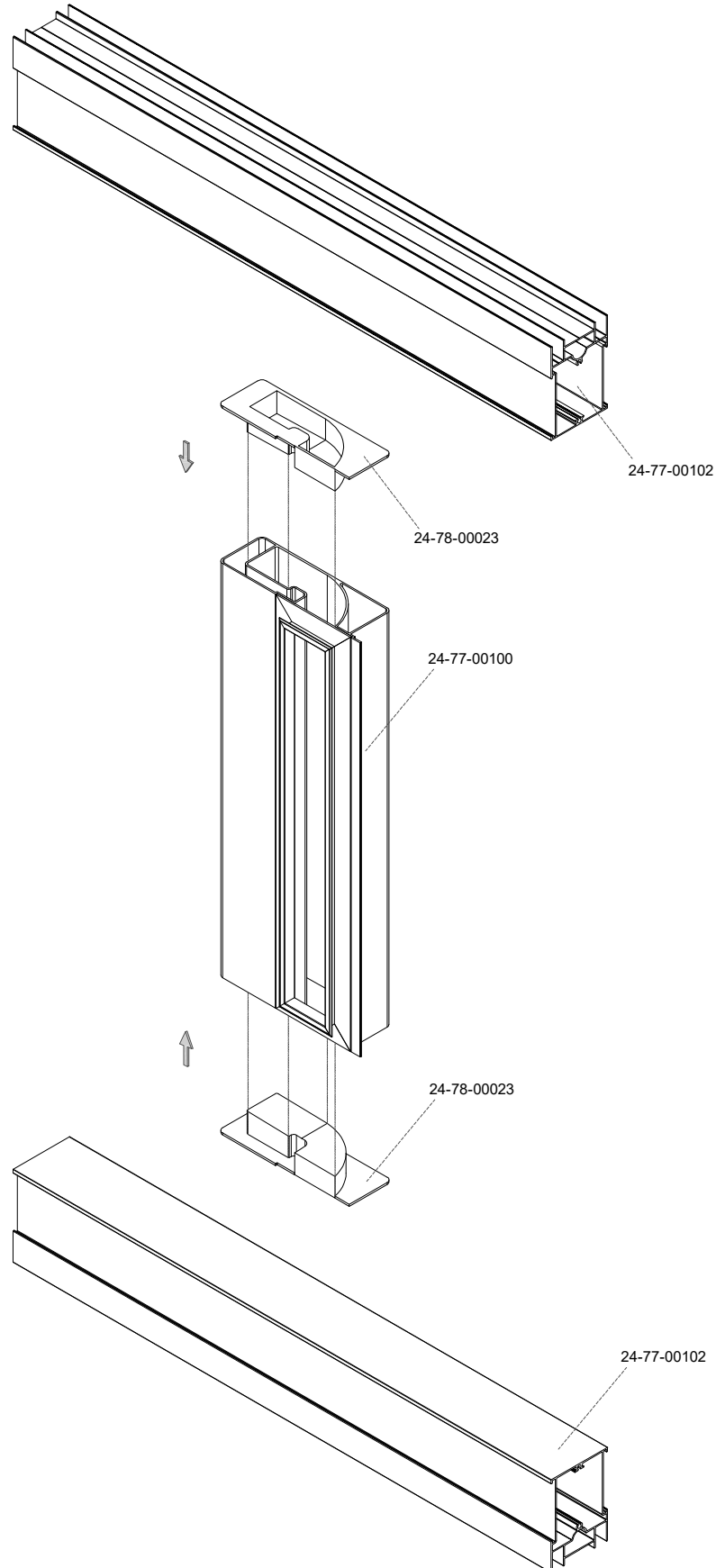


**Μέσα Πλευρά**  
Inside

**Πίσω όψη**  
Back View

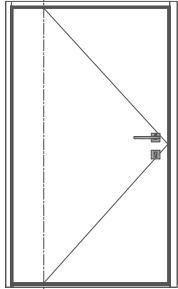


**Έξω Πλευρά**  
Outside



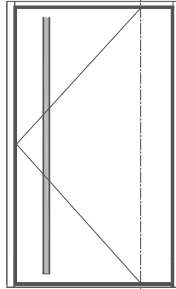
## Τοποθέτηση χερουλιού στο φύλλο Handle installation to the sash profile

**Μπροστά Όψη**  
Front View

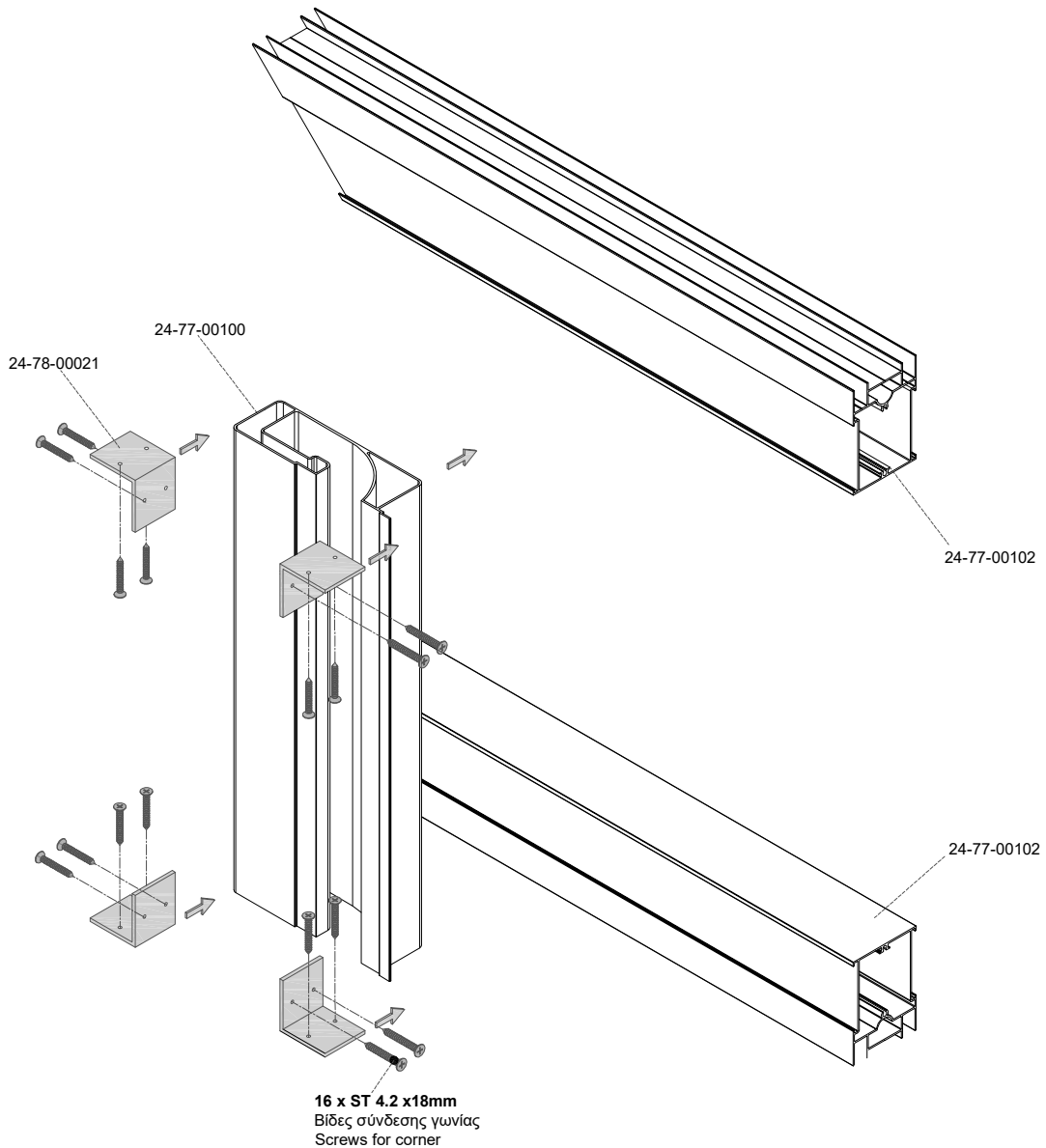


**Μέσα Πλευρά**  
Inside

**Πίσω όψη**  
Back View

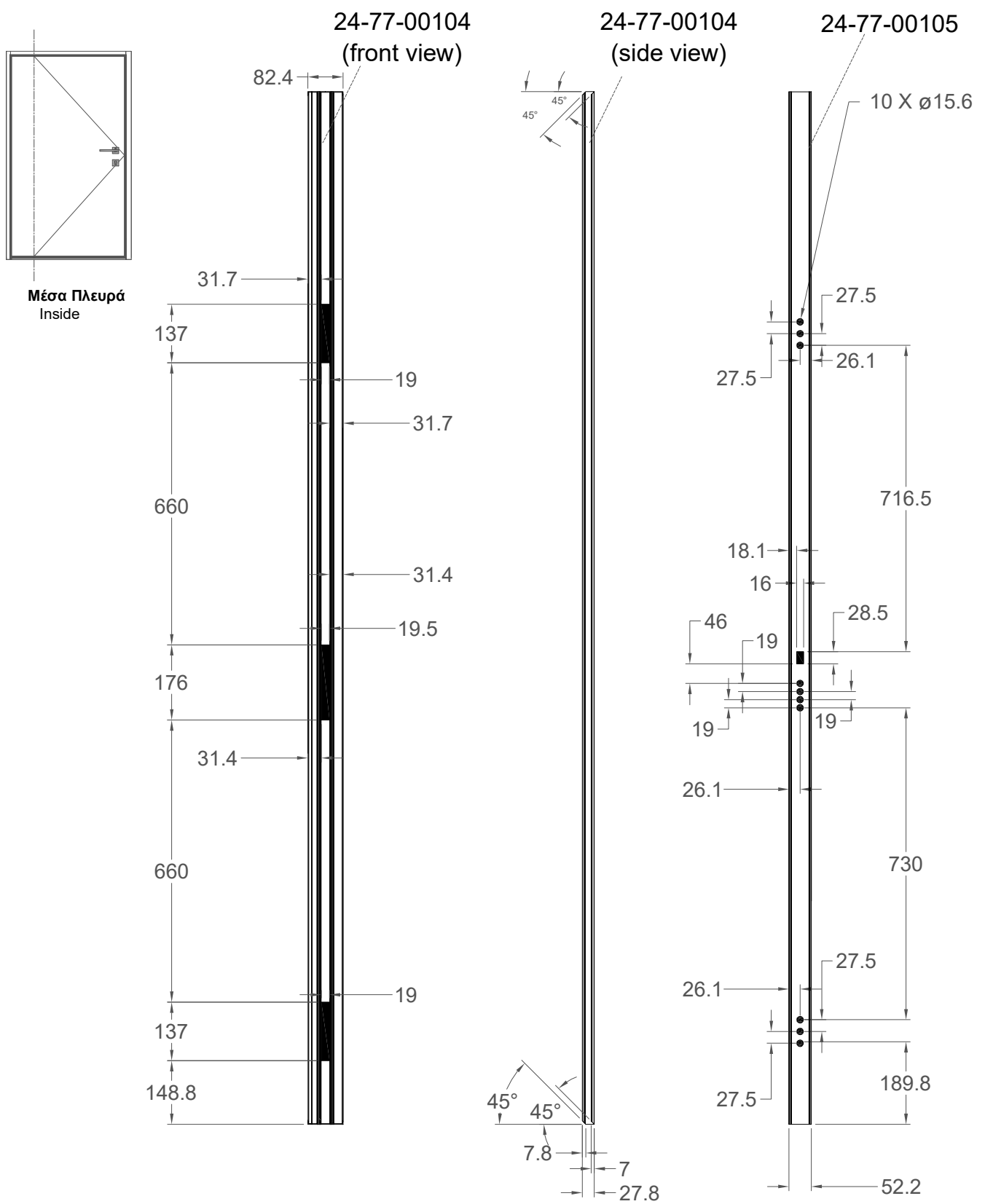


**Έξω Πλευρά**  
Outside

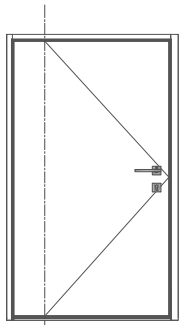


# Pivot MultiFrame

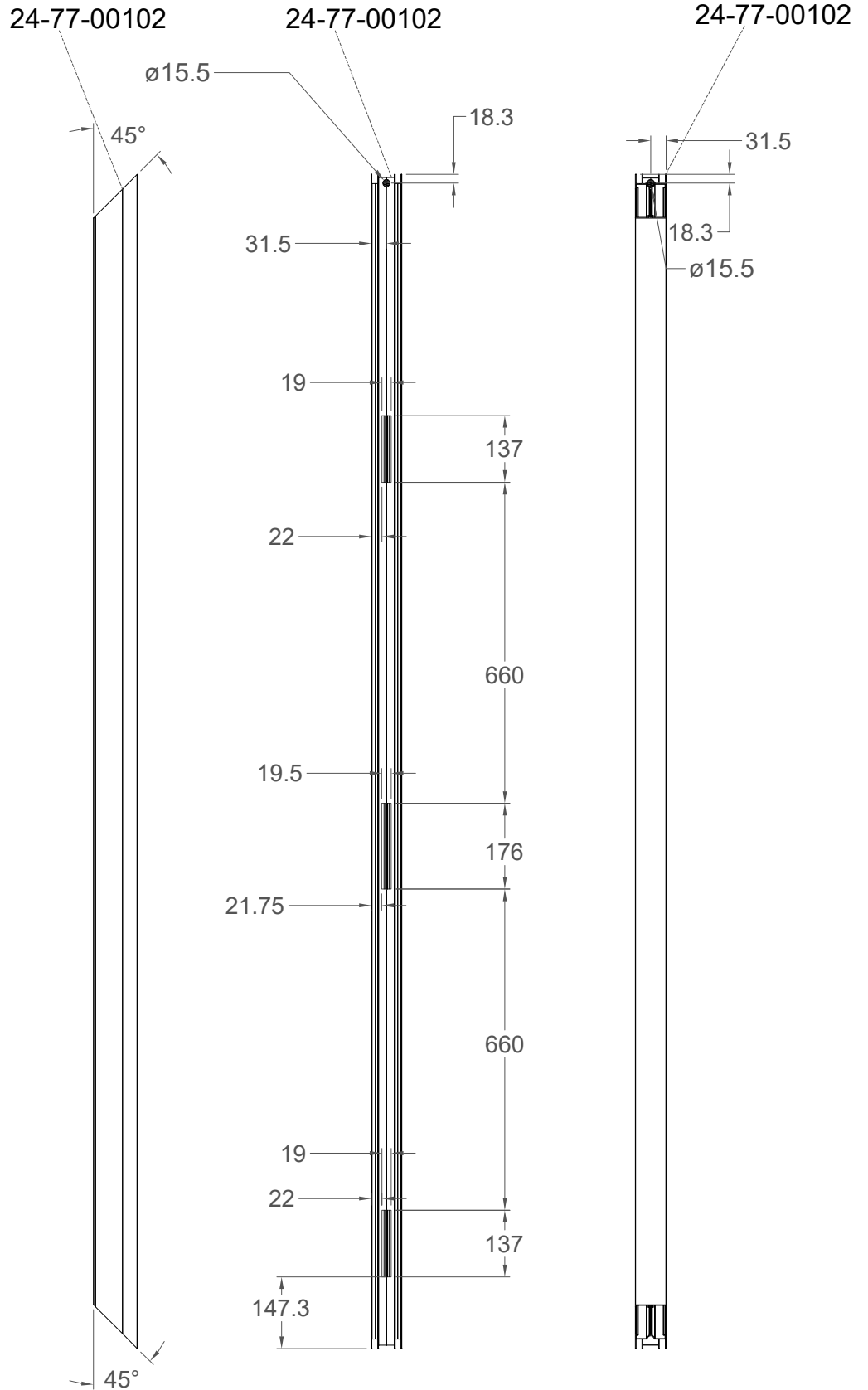
**Κατεργασία επιπρόσθετου προφίλ φύλλου και προφίλ καπάκι για τοποθέτηση κλειδαριάς.  
Machining on additional profile for sash and cover profile for lock installation.**



**Κατεργασία προφίλ φύλλου για τοποθέτηση κλειδαριάς.**  
**Machining on sash profile for lock installation.**

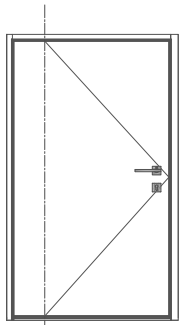


**Μέσα Πλευρά**  
Inside





## Τοποθέτηση κλειδαριάς Lock installation

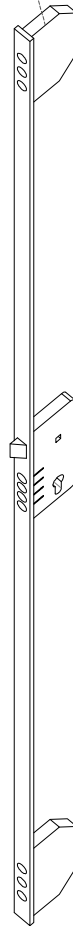


Μέσα Πλευρά  
Inside

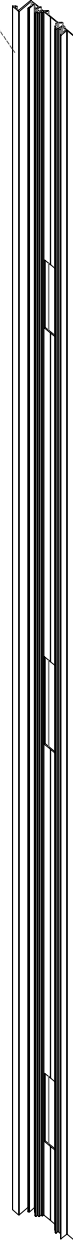
24-77-00105



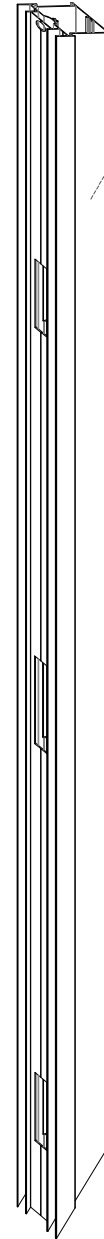
E2000B/3



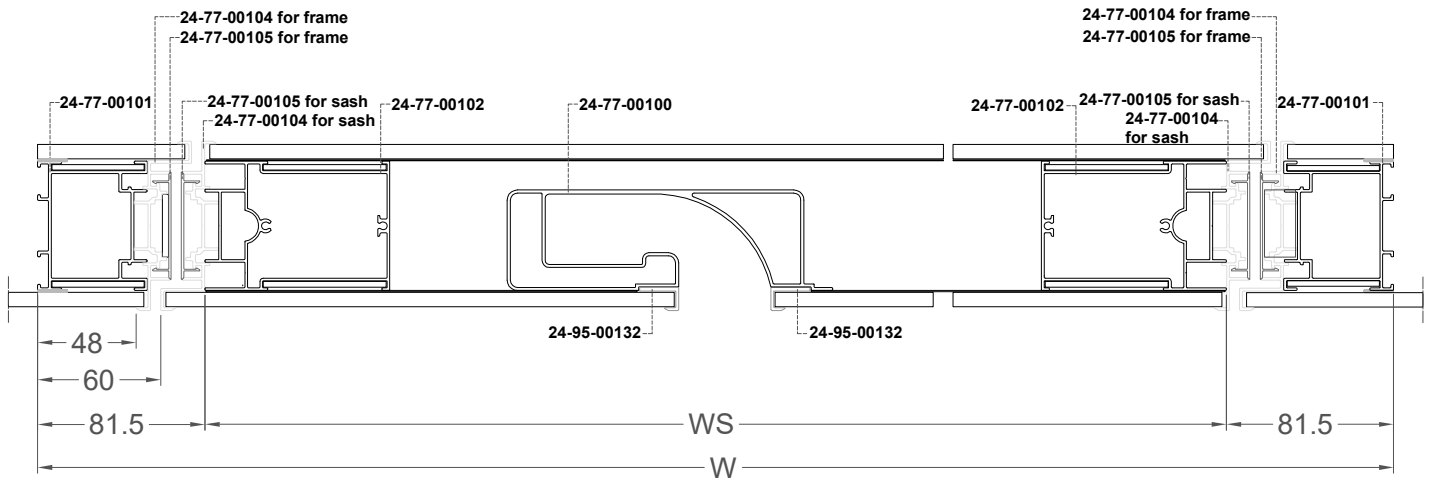
24-77-00104



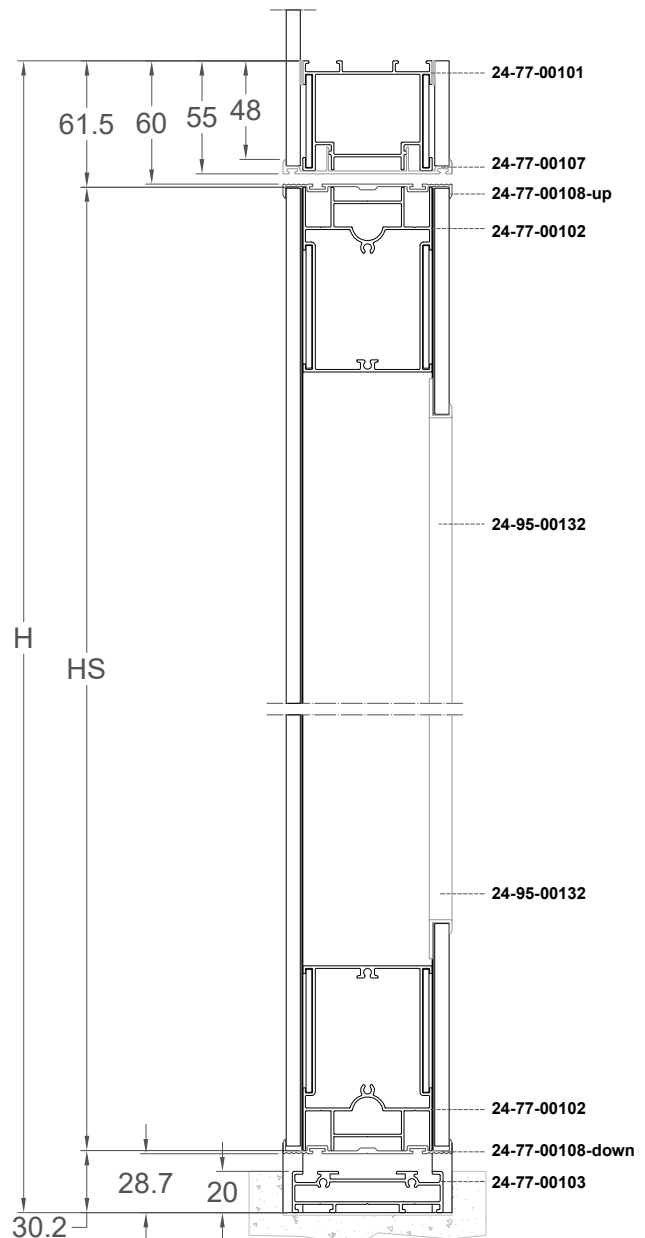
24-77-00102



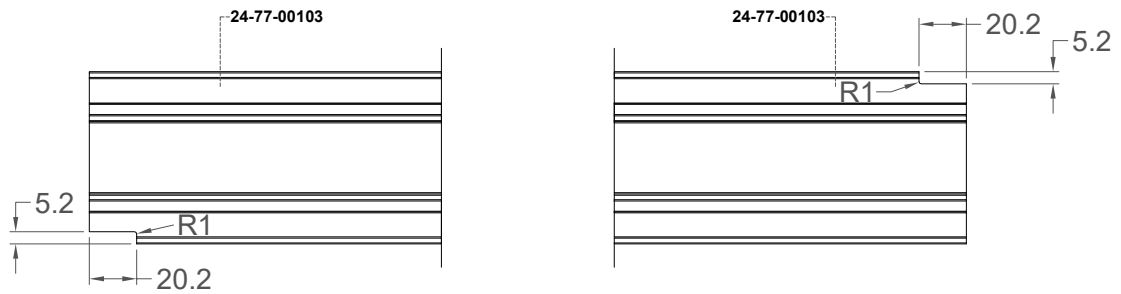
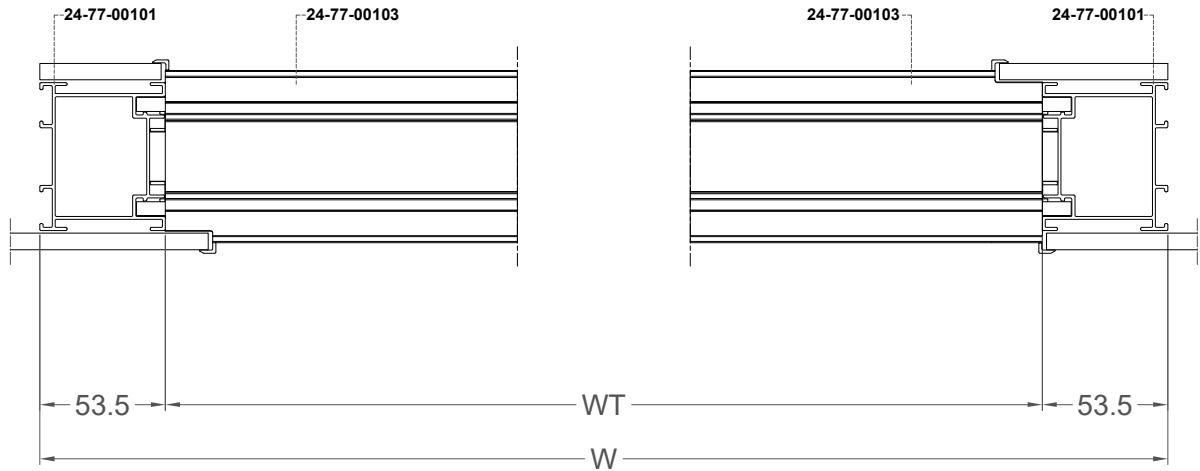
## ΜΕΤΡΑ ΚΟΠΗΣ ΓΙΑ ΚΑΤΑΣΚΕΥΗ ΠΟΡΤΑΣ PIVOT CUTTING CALCULATIONS FOR CONSTRUCTION OF Pivot MultiFrame



PROFILE CUTTING		
Description/ Code	Dimensions	Cut
Frame width	W	45°-45°
Frame height	H	45°-90°
Sash width 24-77-00102	WS= W-163mm	45°-45°
width 1 24-77-00107	W1= W-96mm	45°-45°
width 2 24-77-00108-up 24-77-00108-down	W2= W-120mm	45°-45°
Sash height 24-77-00102	HS=H-91.7mm	45°-45°
height 1 24-77-00104 for frame	H1=H-48mm	45°-90°
height 2 24-77-00105 for frame	H2=H-75mm	90°-90°
height 3 24-77-00104 for sash	H3=H-88.7mm	45°-90°
height 3 24-77-00105 for sash	H3=H-88.7mm	90°-90°



**ΜΕΤΡΑ ΚΟΠΗΣ ΓΙΑ ΚΑΤΑΣΚΕΥΗ ΠΟΡΤΑΣ PIVOT**  
CUTTING CALCULATIONS FOR CONSTRUCTION OF Pivot MultiFrame



PROFILE CUTTING		
Description	Dimensions	Cut
Frame width 24-77-00101	W	45°-45°
Threshold width 24-77-00103	WT=W-107mm	90°-90°